

# Underground car parks

Foundation solutions



**Cover page:**

Hopmarkt underground car park in Aalst, Belgium

## Contents

Tourcoing France	2
Haarlem Netherlands	5
New Islington Manchester, UK	9
Kolkata India	13
St. Martens Latem Gent, Belgium	16
Dadeland Miami, USA	19
Hopmarkt Aalst, Belgium	23
Vogue square Rio de Janeiro, Brazil	25

# Tourcoing

## France

Tourcoing is situated 10 km north of Lille, just a stone's throw from the Belgian border. Famous for its 19th-century textile industry, the French city recently underwent a major redevelopment programme conducted by the urban community of the Lille metropolitan area in order to increase the attraction of the city centre. The project involves the construction of a modern-style shopping mall, a transport hub used by metro, tramway and bus, as well as the development of residential and public areas.

Among the residential areas to be developed was the 40-unit apartment block at the corner of Rue de Chanzy and Rue Lehoucq. One underground level and four upper levels were to be built in densely populated surroundings. Due to the nearby tramway and existing structures including a 19th-century monastery, the jobsite was subject to a number of constraints. Deflection of the sheet pile wall was limited to 20 mm. A fifty-year lifetime had to be guaranteed for the steel elements. A nine-metre-high barrier was erected for protection from nearby high-voltage power lines.

Steel sheet pile retaining walls require only a minimum of space and were thus the ideal retaining wall solution for Tourcoing's latest underground car park. The original design included sheet piles as temporary retaining elements, with a permanent concrete wall. The design was later amended to use sheet piles as permanent elements. Apart from contributing to the watertightness of the excavation, the sheet pile wall also carries horizontal loads from earth pressure including imposed loads from road traffic and the tramway. The vertical loads of the residential superstructure were set on a deep foundation of bored concrete piles.

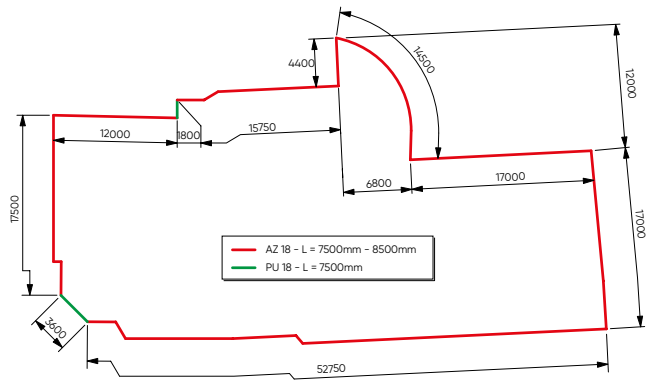
Several boreholes were drilled to a depth of 16 m. Soil analysis revealed the following soil layers (from the top down):

- one metre of made ground;
- up to seven metres of silty to clayey river sand (internal friction angle:  $20 - 28^\circ$ , cohesion up to  $20 \text{ kN/m}^2$ );
- groundwater 1.5 m below ground level (El. +40.30 m);
- increasingly stiff clay substratum to bottom of borehole.



The underground car park beneath the residential building was built with a watertight sheet pile retaining wall





The AZ 18 sheet pile wall surrounding the excavation during the construction stage was subsequently left in place to serve as the outer wall of the underground car park

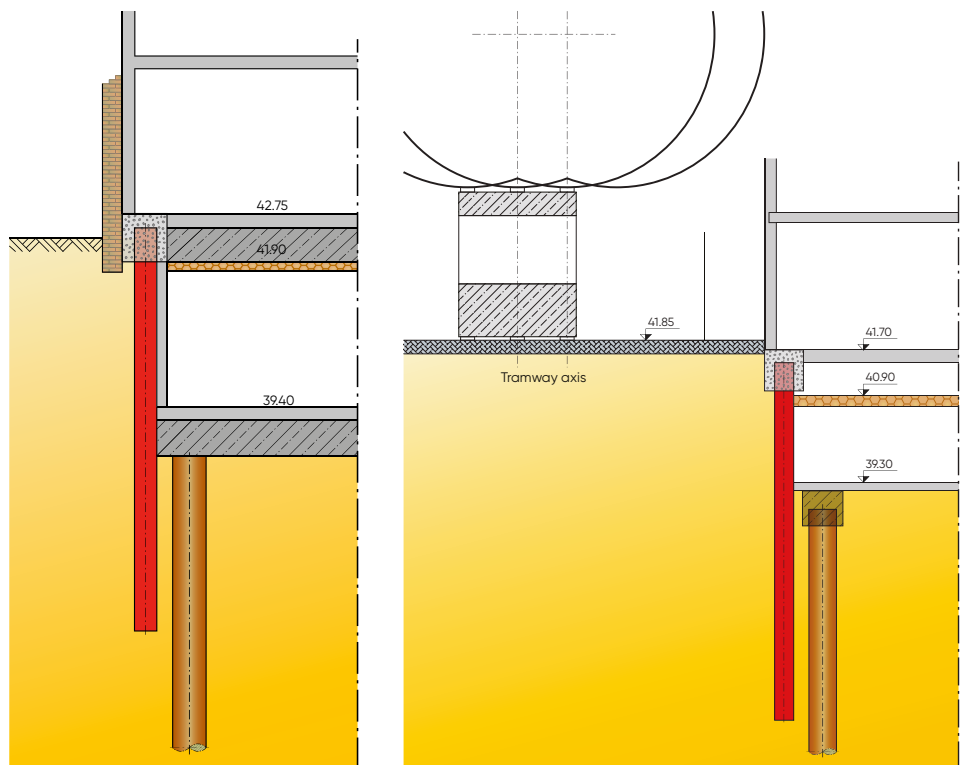
The clayey soil was loosened with a 460-mm-diameter drill before the sheet piles were driven. AZ 18 profiles were mainly used for the project, as well as several PU 18 sheet piles, both types in steel grade S 240 GP. The AZ and PU sheet piles ranging from 7.5 to 8.5 m in length were driven into the stiff clay substratum with a rig-mounted ABI vibratory hammer (MRZV 925). The city had issued severe limits for vibrations in order to prevent damage to surrounding buildings. The jobsite was therefore equipped with special vibration-measuring equipment.

Once the sheet piles had been driven into the clay substratum, a reinforced concrete capping beam was poured onto the head of the piles. Large-diameter steel tubes were bolted to the capping beam to carry the horizontal reaction of the retaining walls during construction. Battered tubes attached to two double AZ piles ensured the stability of the corners of the excavation. The sheet piles remain in the ground as a permanent part of the building, and the top slab of the car park serves as bracing. Rebars were fixed to the sheet piles before the top slab of the car park was poured, thereby ensuring proper connection. The access ramp also features sheet pile retaining walls. The AZ 18 retaining wall has an overall length of approximately 150 m.

To ensure the watertightness of the excavation and hence of the future underground car park, several sealing measures were implemented.

The common interlocks of the AZ 18 double piles were welded together prior to delivery to Tourcoing. In addition, the leading interlocks driven below the bottom slab were filled with a bituminous sealing substance called Beltan.

Once the steel sheet piles were installed, excavation got under way inside the retaining wall. To enable work to be carried out in the dry the water table was lowered two metres by pumps inside the excavation.



The underground car park was built in a cramped inner-city area right next to existing buildings and transport infrastructures



A concrete capping beam was then poured on to the head of the sheet piles

After completion of the excavation works, the parts of the interlocks visible from inside the excavation were seal-welded. A small horizontal drainage system completed the waterproofing system of the car park. As the upper structure is founded on concrete dividing walls, the connection between the bottom slab and the sheet piles was not required to take significant loads.

As the pumps were placed inside the excavation, they had to cope merely with minor water flow through the unwelded leading interlocks before seal-welding of these interlocks was finalised. Alternative construction methods often require heavy groundwater pumping during the entire construction period. This may engender severe settlement, thus jeopardising nearby infrastructures.

140 tonnes of steel sheet piles with a capping beam were installed within six weeks, despite the complex shape of the excavation. Started in April 2006, construction of the residential building in Tourcoing was completed by mid 2007. The AZ 18s were coated in different colours and are an aesthetic bonus for the car park.



Horizontal reactions were carried by steel struts



Coated AZ 18 sheet piles as outer wall of the car park and access ramp

#### Tourcoing | France

**Owner:** Immobilière Nord-Artois

**Designer:** Architect Alain Bossan

**Contractor:** Rabot Dutilleul Construction

**Steel sheet piles:** AZ 18, PU 18

**Connectors:** C9, Omega 18, Delta 13

**Steel grade:** S 240 GP

**Sheet pile length:** 7.5–8.5 m

**Total quantity of sheet piles:** 140 tonnes

# Haarlem

## Netherlands



The "Raaksproject" includes the construction of 220 apartments and a commercial area



The project is a redevelopment plan for a 2-hectare inner-city area of the sheet piles

Haarlem is situated 20 km west of the Dutch capital Amsterdam. The decision to redevelop a two-hectare inner-city area as a reaction to a shortage of parking space, amongst other reasons, was made in 1998. Property development company Bouwfonds MAB Ontwikkeling and the city of Haarlem inaugurated the "Raaksproject" in 2004. It includes the development of 220 apartments and a commercial area of 20,000 m<sup>2</sup>.

The existing infrastructure, a public car park and several school buildings were demolished. The first phase of the Raaksproject, including a two-level, 200-parking-space car park (P2), was launched in September 2006. Built mainly with AZ 26 sheet pile retaining walls, the car park will be temporarily accessible to the public.

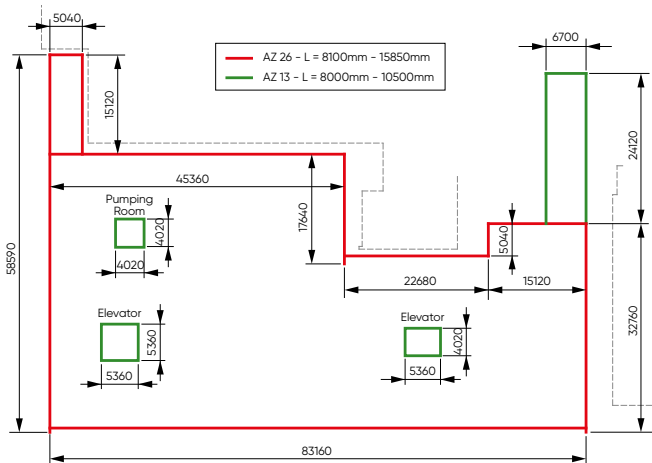
Construction of the large, three-storey public car park P1 with capacity for 1,000 vehicles, right next to the smaller car park, started in January 2007. Construction was divided into 2 parts: P1A and P1B. A retaining wall mainly consisting of AZ 36-700 sheet piles surrounded the excavation. Completion is scheduled for 2009, as part of the second phase of the Raaksproject. Once the large public car park is opened, its smaller counterpart will be accessible solely to the owners of the newly built apartments.

The sheet pile walls of both car parks remain permanently in the ground.

Soil analyses were carried out with a technique commonly used in the Netherlands: the Cone Penetrometer Test (CPT). Providing real-time data, the method consists of a steel cone that is pushed into the ground hydraulically. Sensors at the tip of the cone collect data for classifying soil types.







Car park P2: 2 levels, capacity of 200 cars, AZ 13 &amp; AZ 26 sheet piles

The surface elevation ranged from +0.5 to +1.0 m and the water table was encountered just below the surface at El. -0.10 m. The cone resistance of the upper soil layer was very low ( $< 2 \text{ MN/m}^2$ ). At a depth of 6 metres, the resistance rose to 15–20  $\text{MN/m}^2$ .

1,670 tonnes of AZ 36-700 and 250 tonnes of AZ 36 sheet piles were delivered by lorry to the jobsite in Haarlem. The first pile for the retaining wall of the 1,000-vehicle-capacity car park was installed in September 2006. Once the AZ piles were in the ground, soil was excavated to a depth of -1.60 m.

The groundwater level was lowered to -5.3 m before the upper inclined active tie rod was placed at El. -1.10 m. Every third AZ 36-700 double pile was secured with a tie rod, corresponding to a c/c spacing of 4.2 m (c/c = 3.78 m for AZ 36 piles). Excavation then proceeded and the second tie rod level was installed at El. -4.15 m. The water level was raised to El. 0.0 m again before excavating to the final depth of -12.50 m and placing a 250-mm gravel layer and a 1,500-mm sub-base of underwater concrete. Grout injection piles hold the slab in place after dewatering.

The following types of AZ double piles in steel grade S 355 GP were installed:

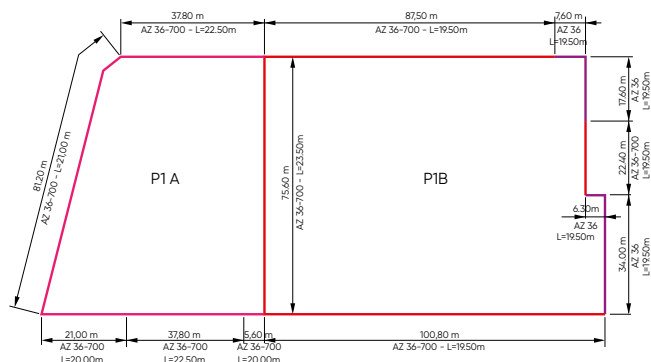
P1A: 670 tonnes AZ 36-700, L = 20–22.5 m

P1B: 250 tonnes AZ 36, and 1,000 tonnes AZ 36-700, L = 19.5–23.5 m

The sheet piles were delivered as welded double piles. No other temporary sealing method was used so as not to hinder later welding works. Once driving was completed and the construction excavation dewatered, the middle interlocks were seal-welded to achieve a completely watertight retaining wall. Fire analysis showed that no special protection was necessary.



Car park P1 was built in two phases separated by a temporary AZ 36-700 sheet pile wall



1,920 tonnes of sheet piles were used to support the excavation (11.5 m deep in places)



Car park P1: 3 levels, capacity of 1,000 cars, AZ 36-700 sheet piles





The contractor reduced noise and vibration emissions effectively by pre-drilling the soil before driving the sheet piles

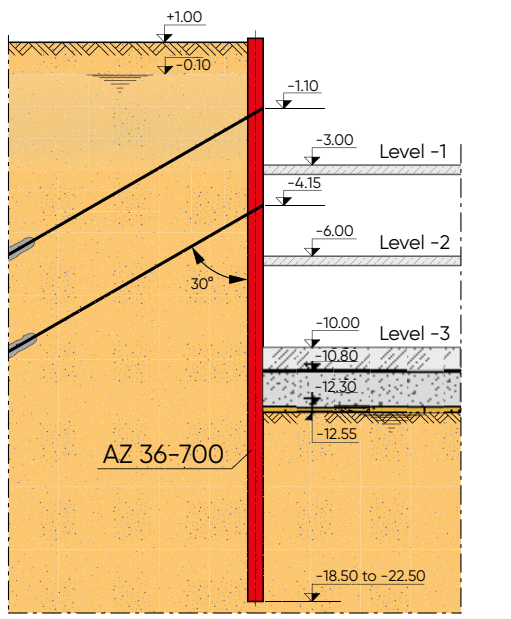


The AZ piles were installed with a PVE vibratory hammer with variable moment

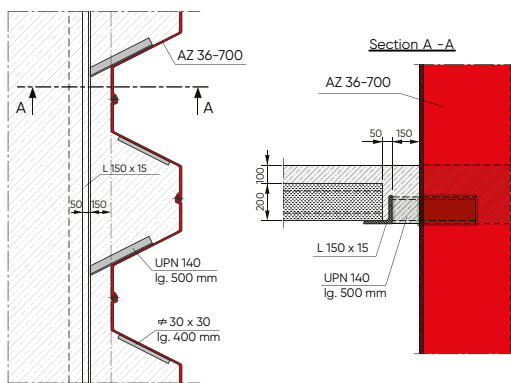
Two different methods were used to drive the piles: the AZ 36 piles were pressed as quadruple piles with ABI's HPZ hydro-press (pressing power:  $4 \times 800$  kN). The other piles were installed with a PVE 2335 VM high-frequency vibratory hammer with variable moment (eccentric moment: 0–35 kg/m, centrifugal force: 2,000 kN) suspended from a crawler crane. A steel template was used to position the piles correctly; verticality was checked with a spirit level.

The sub-base also acts as a strut and by taking the thrust on the sheet pile retaining wall enabled water to be pumped from the excavation once the underwater concrete had reached a sufficient stiffness.

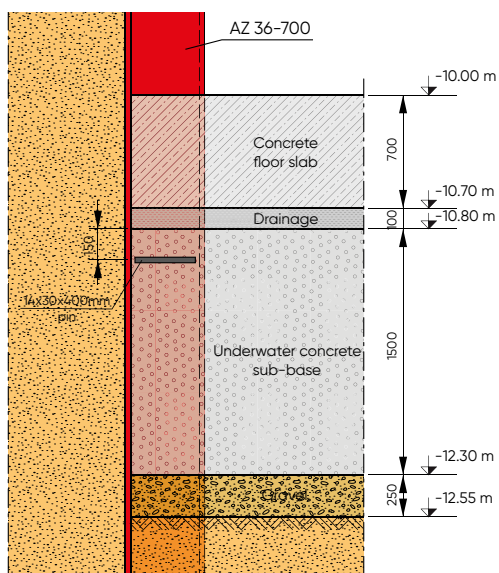




Connection between sheet pile wall and car park deck



Sheet-pile-to-car park-deck connection detail



Studs welded to the AZ 36-700 piles ensured proper connection to the base slab

A horizontal drainage system and a 700-mm concrete slab were installed in the dry, making the connection watertight. Studs welded to the AZ piles transmit shear forces between sheet piles and the entire base slab.

The upper three underground floors were built next, and the tie rods were cut. UPN sections with an average length of 500 mm were welded to the webs of the AZ piles to enable an L-shaped section to be fixed a standard distance of 150 mm from the sheet pile flanges. A 200-mm precast reinforced concrete top slab was lowered onto the 150\*15 L section. Formwork was placed in the pans of the sheet piles and another 100 mm of concrete was then poured onto the precast slab to obtain a strong continuous 300-mm-thick slab. A separate foundation system was built, making it unnecessary for the peripheral connection to transmit the high loads of the car park and the buildings built on top. The upper slab of level -1 coincides with the head of the sheet piles at El. +1.0 m.

A declutching detector was used to guarantee interlocking of the AZ double piles. Welded to the bottom of the interlock before driving, the detector is equipped with a sensor pin that is sheared off by the following pile. This information is transmitted to a monitoring unit on the surface, notifying the contractor if declutching is an issue on site.

#### Haarlem | Netherlands

**Owner:** Bouwfonds MAB Ontwikkeling

**Designer:** Bolles + Wilson, Bouwfonds MAB Ontwikkeling

**Contractor:** Dura Vermeer Bouw, Haarlemmermeer BV

**Steel sheet piles:** AZ 36-700, AZ 36

**Sheet pile length:** 19.5–23.5 m

**Steel grade:** S 355 GP

**Total quantity of sheet piles:** 1,920 tonnes



# New Islington

Manchester | UK



Designed by British architect Will Alsop, the striking Chips building is one of the main features of Manchester's New Islington Millennium Village development

New Islington Millennium Village, a short distance east of Manchester's city centre, is anything but conventional as the name of the planned residential scheme "Chips" might suggest. The designer of the project, British architect Will Alsop, is famous for designing buildings of unusual forms distinguished by their vibrant use of bright colours. Surrounded by water on three sides, his latest brainchild promises to be one of Manchester's most striking buildings, with dramatic shapes and cladding. Nine storeys high, it zigzags along the edge of the Ashton Canal as a group of three-storey elements ("Chips") stacked on top of each other. Developed by Urban Splash, "Chips" – totalling 142 apartments – is the first project available for private sale at New Islington.

Launched in December 2005, the homes, work spaces and underground car park are on target for completion by the end of 2008. Steel sheet piles had established themselves as the ideal solution for extending New Islington's canals and were now the natural choice for the retaining wall of Chips' single-level basement. Quick to install, sheet piles are the most economical retaining elements for inner-city construction sites faced with space restrictions or high groundwater levels.

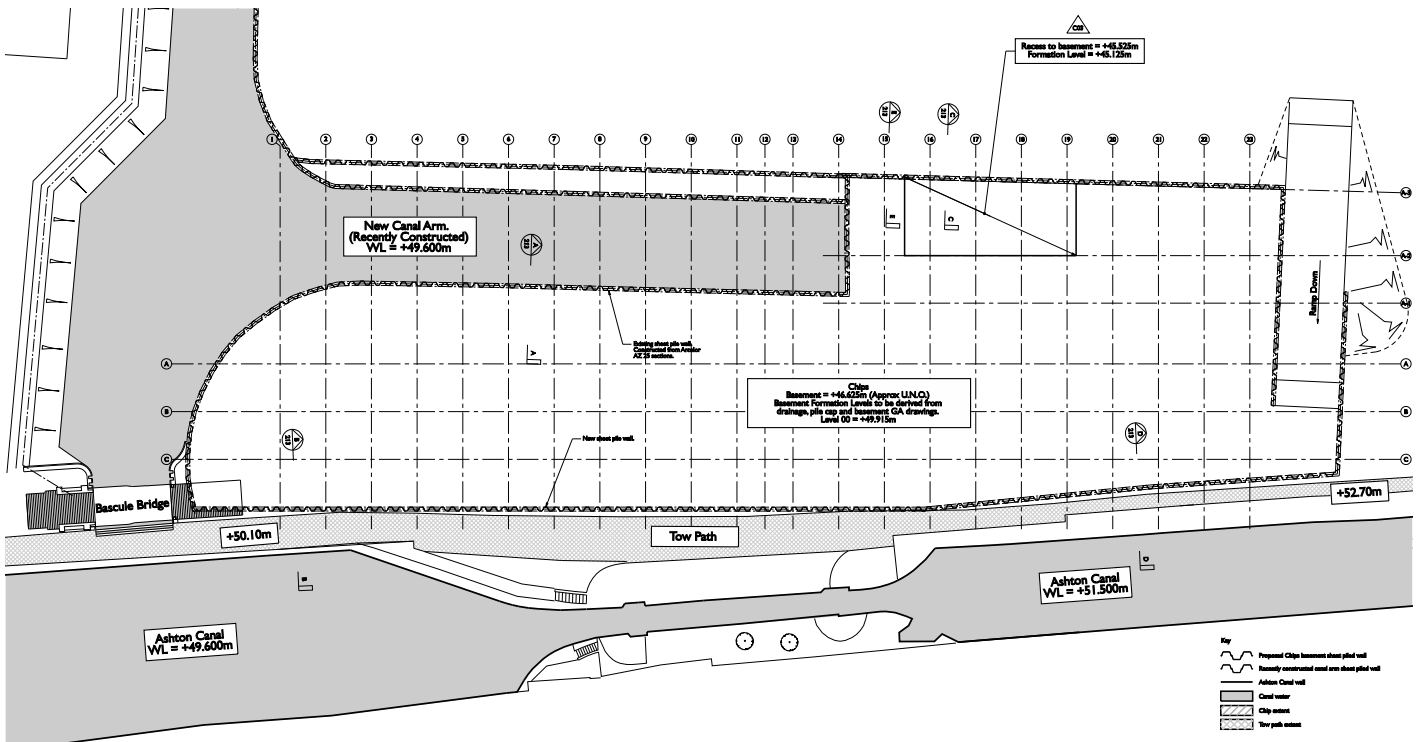
The first phase of the project – the construction of a new canal arm of Ashton Canal – was carried out in 2003.

415 tonnes of AZ 25 sheet piles in steel grade S 270 GP, ranging from 6 to 11 m in length, were installed as a cantilever retaining wall supporting the banks of the new canal. As well as several special piles with welded-on Omega 18 and C 9 corner sections, eight bent piles (bending angle: 11°) were used to build the corners and bends of the canal. A reinforced concrete capping beam was poured at the head of the sheet piles. The soil behind the new canal arm was removed three years later, leaving the AZ 25 wall as the sole separation between the water of the new canal and the excavation for the basement of the Chips building.

The second phase was launched by investigating the geology of the former Ancoats Hospital site. This was done by Coffey Geotechnics (formerly Edge Consultants).







The soil behind these AZ 25 piles was removed in 2006 to leave the sheet piles as the sole separation between the excavation and the new canal arm

Several 30-m-deep boreholes were drilled to predict the drivability of the sheet piles. The bore logs showed three metres of made ground overlying stiff sandy, gravelly clay with SPT values averaging 20 blows to a depth of 13 m. Further down, SPT values increase to 40 blows where a mixture of dense sand and fine gravel prevails.

The water table is relatively high due to New Islington's countless canals.

Complete watertightness of the basement was achieved by seal-welding the interlocks of the sheet piles. AU 25 and AZ 25 piles are all that separates the basement from



AU 25 sheet piles were installed during the second construction phase as permanent outer wall of the Chips building's single-level basement

---

different media – soil and canal water – and thus minimise loss of space. The basement of the Chips building shares one wall with the adjacent development.

The sheet piles for phase 2 were carried by lorry from the rolling mill in Luxembourg to Manchester in March 2006.

Piling contractor Stent Foundations Limited used an ABI rig fitted with a vibratory hammer to install the 312 AU 25 single piles up to 13 m long. A 5-m-deep pit was then excavated to place the reinforced concrete bottom slab with a watertight connection to the sheet pile wall. The upper 250 mm of the AU piles was cast into a capping beam running along the entire retaining wall. Just as with the AZ sheet piles, the interlocks of the AU piles were seal-welded to obtain a watertight wall on each side of the basement. A 300-mm-thick top slab completed the underground structure.

The Chips building basement was designed by Martin Stockley Associates, a Manchester-based consultant. The fire engineering verification proved that no fire protection was required for the majority of the sheet piles as they were installed next to canals. However for the upper part of the wall common to the neighbouring building it was necessary to provide concrete stiffening in the sheet pile pans at the position of the columns above since there was no soil to provide a suitable heat sink.

The piles were grit blasted to give a clean even surface, then left to rust. They were not coated, so as to maintain an industrial appearance for the steel – an acknowledgement of the city's past. Due to the different elements behind the sheet piles (i.e. soil, water or air), the appearance of the piles' surface varies.

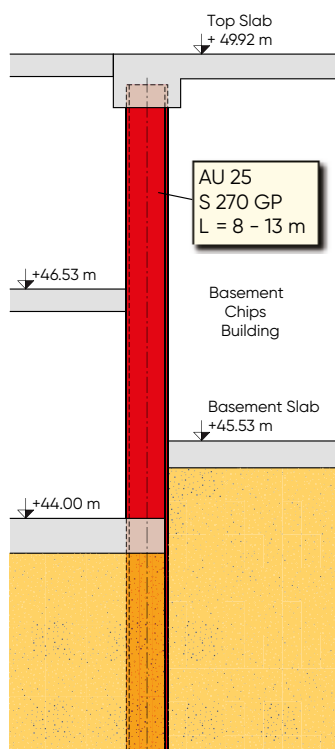


New canal arms were built in New Islington in 2003 using AZ 25 steel sheet piles as retaining elements



The soil and water retaining sheet pile walls enabled construction in the dry

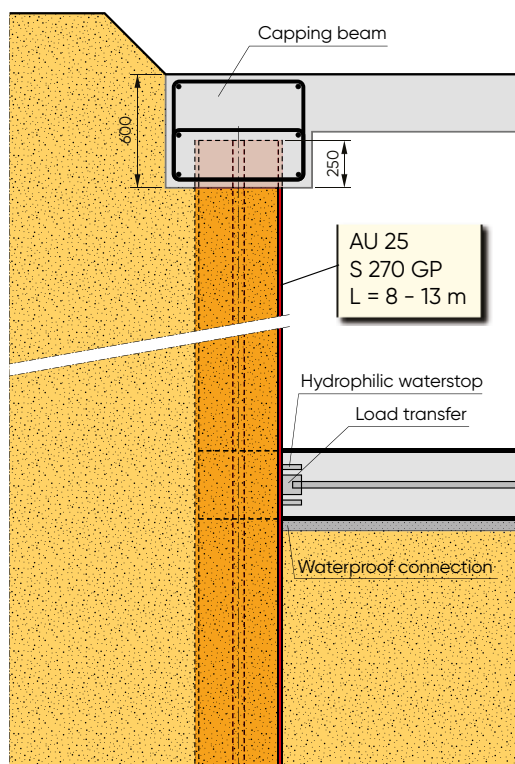




The adjacent building has a common sheet pile wall with the Chips building



The Splash project is due to be completed by 2008



A watertight bottom-slab-to-sheet-pile connection and seal-welded interlocks ensure that no water will penetrate into the basement

New Islington, Manchester | UK

**Owner:** Urban Splash Ltd

**Designer:** Martin Stockley Associates (MSA)

**Contractor:** Urban Splash Construction Ltd, Stent Foundations Ltd (subcontractor piling)

**Steel sheet piles:** AZ 25 (Phase 1), AU 25 (Phase 2)

**Sheet pile length:** 6–11 m (Phase 1), 8–13 m (Phase 2)

**Steel grade:** S 270 GP

**Total quantity of sheet piles:**

415 tonnes (Phase 1), 320 tonnes (Phase 2)

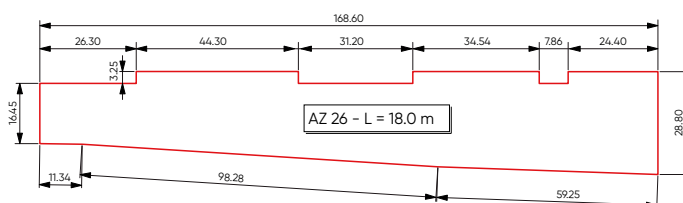


# Kolkata

## India

Kolkata, formerly known as Calcutta, is India's fourth-largest city, a famous historic landmark, and the capital of West Bengal state. A period of economic stagnation followed the country's independence decades ago but has been replaced by a boom engendering rapid growth in all domains, including road traffic. The population of the eastern Indian mega-city currently exceeds 15 million.

Part of the city's expansion included a new underground shopping mall with integral car park, to be built in the middle of dense urban development. It consists of a shopping mall at level -1 and the country's first car park equipped with an automated parking system at level -2. It is located right next to the red-brick New Market heritage structure on Lindsey Street, famous for its fabulous clock tower. The two 4,000-m<sup>2</sup> underground levels were built with the top-down method. The basement was surrounded with a sheet pile wall, these prefabricated interlocking elements being the fastest and most economical construction alternative for the underground structure. The shopping mall was officially inaugurated after a construction time of four years. The car park has since then attracted a lot of attention due to its efficient storage system featuring fully computerised pallets moving up to 280 cars to their designated parking slots.



The retaining wall is approximately 376 m long overall

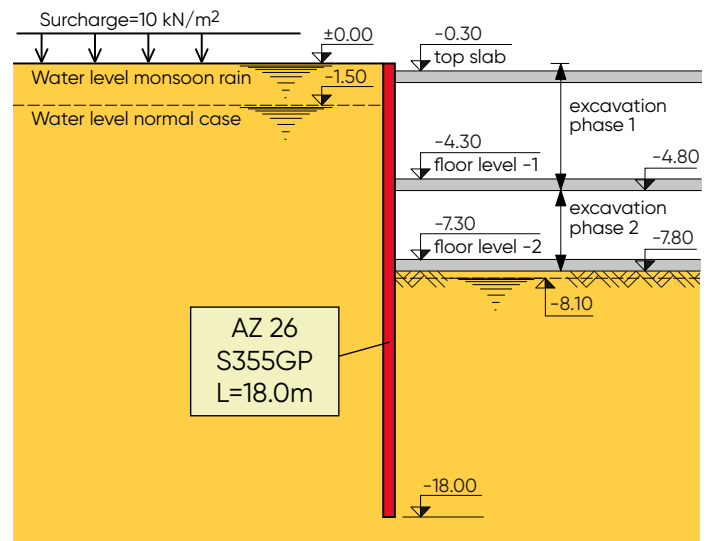
The construction of the shopping mall and car park was launched with a soil investigation carried out by the local companies Geotest and Drillers & Engineers. Special attention had to be paid to the groundwater levels that regularly rise from their habitual elevation of 1.5 m below ground level to El. 0.0 m or higher during the monsoon season.

The two-level underground structure will feature a shopping mall and a car park



ArcelorMittal's technical department submitted a preliminary sheet pile wall design to the owner. The sheet piles act purely as a retaining wall. The vertical loads of the concrete upper deck are carried by a separate foundation system. As the structure was built with the top-down method, the concrete decks at El. -0.3 m and El. -4.3 m and the bottom slab at El. -7.3 m act as struts transmitting the horizontal reactions of the retaining wall. The prime advantage of the top-down system, namely quick covering up of the construction area, was important as the square above the construction was soon to be reopened to the public.

The preliminary design was carried out in accordance with EC 3 theories: comparison of existing and maximum allowable steel stress as the main criteria for choosing the sheet pile sections. Partial safety factors were not considered however, and the result of the design was judged against a minimal global safety factor of 1.50. The influence of water pressure due to seepage under the sheet pile wall was taken into account by setting up water pressure diagrams determined with hydraulic gradients. The steel stress verification was done for the following three construction phases as well as for the final stage considering a loss of steel thickness due to corrosion after a lifetime of 50 years.



Several construction stages were considered when designing the sheet pile wall

- Phase 1: Excavation & dewatering to El. -4.80 m, upper strut at El. -0.30 m;
- Phase 2: Excavation & dewatering to El. -7.80 m, strut at El. -4.30 m, water level at El. -1.50 m;
- Phase 3: as per phase 2, water level at El. 0.0 m (monsoon season);
- Phase 4: Final stage, bottom strut at El. -7.30 m, maximal water level under hydrostatic conditions.

The highest bending moment (465 kNm/m) and deflections (63 mm) occur during phase 4. The Technical department proposed an 18-m-long AZ 26 sheet pile in steel grade S 355 GP as a suitable profile. The steel stress verification of the AZ 26 characterised by a section modulus of 2,600 cm<sup>3</sup>/m showed an existing stress of 179 N/mm<sup>2</sup>. The allowable stress amounts to 355 N/mm<sup>2</sup>, resulting in a safety factor of 2.0.

The verification after an assumed lifetime of 50 years is based on the loss of steel thickness due to corrosion given by tables in EC 3. As the inner side of the basement structure is coated, loss of thickness had to be considered only on the outer side. A loss of 1.75 mm was determined assuming the presence of aggressive natural soil. The recalculated reduced section modulus of the AZ 26 sheet pile due to corrosion was 2,300 cm<sup>3</sup>/m. The safety factor following a half-century's exposure to aggressive natural soil thus amounts to 1.76.

The owner of the project eventually opted for AZ 26 sheet piles in 6 and 12 m lengths to allow shipment in containers. The piles were spliced on the job site.



Steel sheet piles are a preferred choice for construction sites in confined spaces. The perimeter wall of the car park was built with 628 AZ 26 sheet piles





The top-down method reduced the period during which the construction area was unavailable for public use



Some 1,110 tonnes of 18-m-long AZ 26 single piles in steel grade S 355 GP were installed. C 9, C 14 and Omega 18 connectors were used to join the piles at the corners of the wall. The AZ 26s were driven with a resonance-free vibratory hammer suspended from a crawler crane. They form a 167-m-long parallelogram with a width of 15 to 27 m and a perimeter of about 376 m. The vertical loads of the superstructure are carried by 500-mm-diameter concrete columns.

The side of the AZ piles facing the shopping mall and car park was coated for aesthetic reasons. Kolkata's first fully automatic car park was made watertight by seal-welding the Larssen interlocks of the AZ 26 sheet piles. A fire analysis showed that fire protection could be assured by an ordinary sprinkler system.



The sheet piles were installed with a resonance-free vibratory hammer



A separate foundation system carries the main vertical loads

Kolkata | India

**Owner:** Simpark Infrastructure Pvt Ltd

**Contractor:** Simplex Projects Ltd

**Consultant:** Aronsohn Constructies, Rotterdam

**Steel sheet piles:** AZ 26

**Sheet pile length:** 18 m

**Steel grade:** S 355 GP

**Total quantity of sheet piles:** 1,100 tonnes



# St. Martens Latem

Gent | Belgium



The sheet piles were installed with an ABI hydraulic press allowing vibration-free installation of four single piles at once

Saint-Martens-Latem is a small town of 8,000 inhabitants situated in the Belgian province of East Flanders, right next to Ghent, formerly one of the largest and richest cities in north-western Europe due to its busy port.

The street Kortrijksesteenweg is home to the Mercedes-Benz and Smart dealer in Sint-Martens-Latem. Two new showrooms, a workshop and an underground car park feature among the new buildings of the sales and after-sales service built in 2002. The outer wall of the single-level underground car park was designed as a sheet pile retaining wall. The sheet piles function as a watertight excavation enclosure, are an essential part of the loadbearing structure of the showroom above, and last but not least, as permanently visible elements, are a precious aesthetic contribution to the showroom.

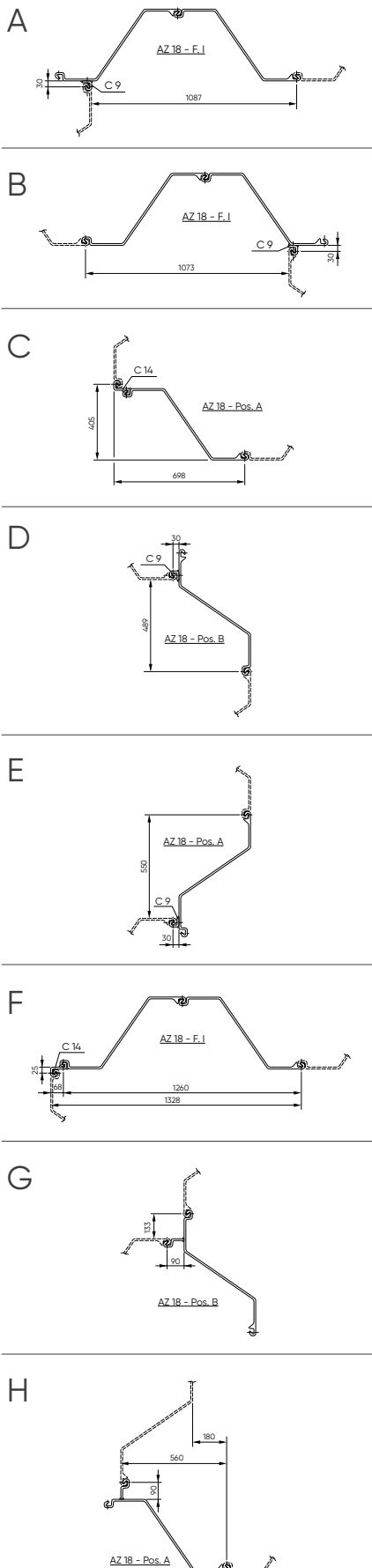
ArcelorMittal's in-house design department carried out a preliminary static analysis and proposed 8.5-m AZ 18 steel sheet piles in steel grade S 270 GP with a section modulus of  $1,800 \text{ cm}^3/\text{m}$  as retaining wall elements. The rectangular basement, 45 m in length and 23.5 m in width, features a 15-m-long access ramp. The corners were executed with C 9 and C 14 connectors and with the help of two special piles.

The design of the sheet pile retaining wall is based on the geometry defined by ELD Partnership and on the bore logs from Bureau Geosonda who carried out several cone penetration tests (CPT) in situ. The log files report soft, cohesion-free silt (CPT = 4 MPa) to a depth of 15 m.

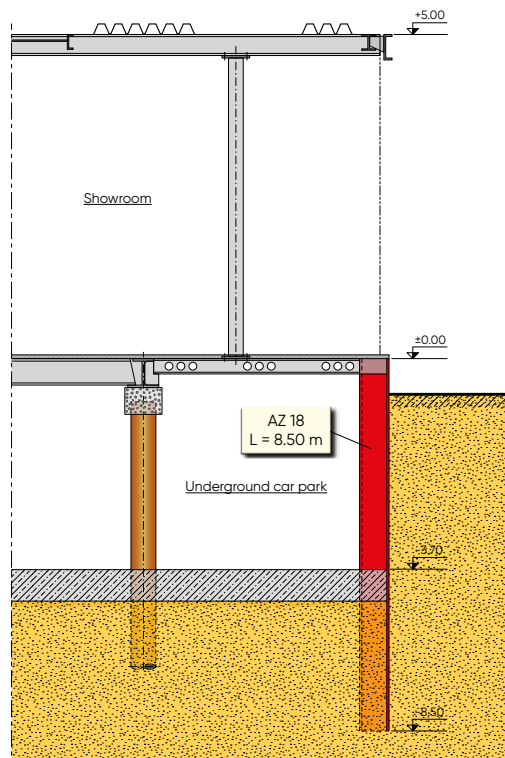
The borehole was stopped when a dense sand layer was reached just below El. -15 m. Groundwater was encountered just below the surface (El. -0.5 m).



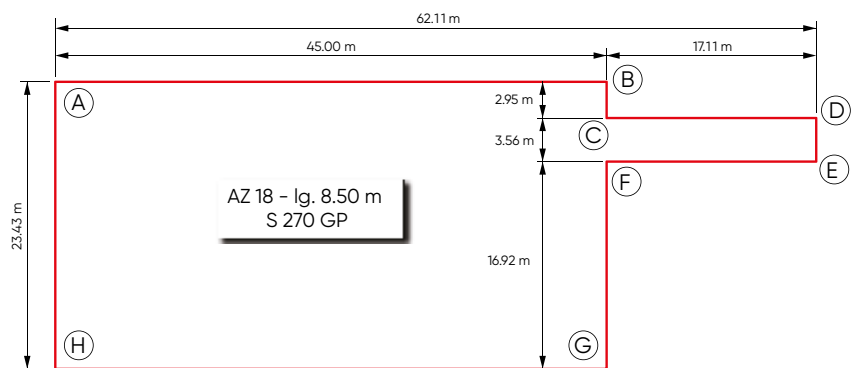
The Mercedes-Benz and Smart dealer in Sint-Martens-Latem built an underground showroom in 2002



The corners of the basement wall use connectors and special piles



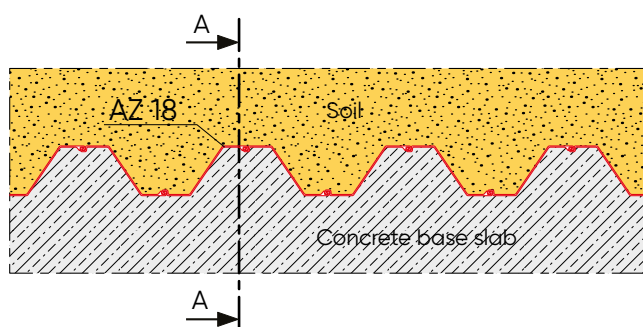
The AZ piles remain visible once the showroom is completed



175 tonnes of AZ 18 sheet piles were used to build the 45 by 23.5 m underground showroom

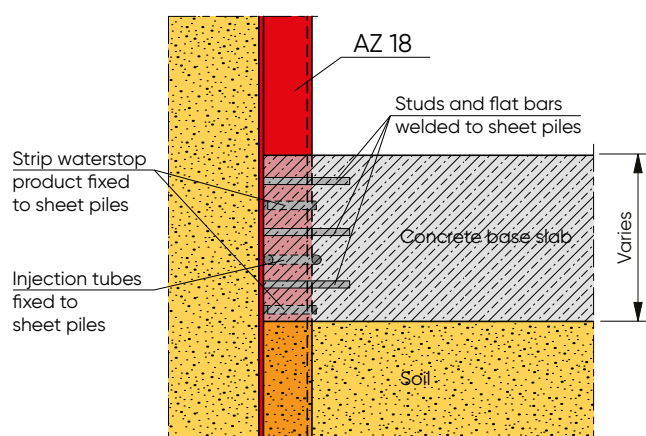


After excavating inside the basement walls, anchors were installed to hold the concrete base slab securely in place



Due to the proximity of existing buildings, the sheet piles had to be installed with a minimum of vibration. A practically vibration-free method uses hydraulic presses. The contractor used a rig-mounted ABI hydraulic press to drive the AZ 18 sheet piles. The press is equipped with four clamps to grip four single piles at once. One of the four piles is pushed into the soil under adjustable pressure while the other three piles provide the necessary reaction.

Drainage on the outer side of the building excavation was prohibited so as to avoid settlement of nearby structures. Vertical anchors to hold the base slab in place were installed first. The future car park was then excavated and the concrete base slab was poured. A special connection with studs, injection tubes and waterstops ensures the complete watertightness of the structure built below the groundwater level. Construction of the car park and show rooms proceed in the dry. The interlocks of the AZ 18 sheet piles were seal-welded to achieve 100% watertightness. A coating was applied for aesthetic reasons.



Section A - A

A watertight connection between the sheet pile wall and the concrete base slab was designed



The AZ sheet piles were seal-welded and coated to complete the aesthetic showroom

St Martens Latem, Gent | Belgium

**Owner:** Mercedes Benz Gent NV

**Designer:** Bureau Jaspers

**Project management and engineering:** ELD Partnership

**Contractor:** Democo NV, Wedam Bvba

**Steel sheet piles:** AZ 18 and C 14 connectors

**Sheet pile length:** 8.5 m

**Steel grade:** S 270 GP

**Total quantity of sheet piles:** 175 tonnes



# Dadeland

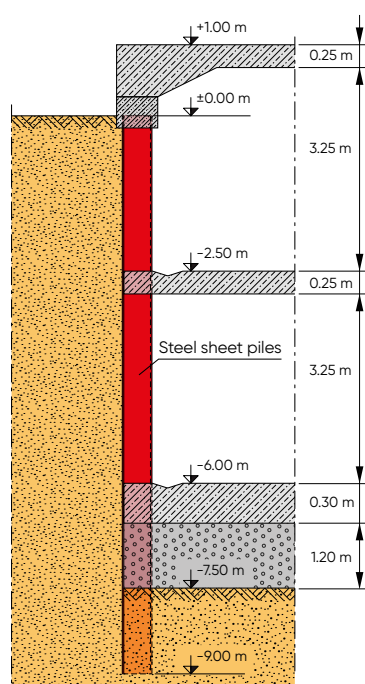
Miami | USA



3,000 tonnes of steel sheet piles were used as permanent and temporary retaining elements



The residential complex built in Dadeland, Miami includes an underground car park for 970 cars



The sheet piles for the two-level structure were driven through the tough Miami limestone

Dadeland is located in South Miami, Florida, USA. The contract to build the \$170 million "Downtown Dadeland" project, a mixed-use re-urbanisation development located on North Kendall Drive across from the upmarket Dadeland Mall, was awarded to local general contractor Miller & Solomon. The 30,000-m<sup>2</sup> landmark project in South Florida is a "village within a city" including 416 condominium residences, an 11,500-m<sup>2</sup> retail area, and a large underground parking garage for 970 cars, all forming seven low-rise buildings. The project was completed in the spring of 2005.

The project got underway in early 2004 with local contractor Ebsary Foundation appointed as subcontractor for the foundation works, including sheet pile installation. The contractor's extensive experience with foundation projects in the highly variable soil strata of South Florida proved invaluable.

Geological investigations of the downtown Dadeland site were carried out by Miami-based geotechnical consultant Kaderabek Company.

Water was encountered three metres below ground within the 4-m-thick top layer of soil, a Miami limestone characterised by SPT values ranging from 30 to 50 blows per 30 cm penetration of the measuring tool. Beneath the Miami limestone, 3 m of loose sand (SPT tests: 10–20 blows) overlies dense limestone and sandstone where the SPT tests reached 100 blows.

South Florida's hard stone layers in conjunction with the high water table often rendered previous below-ground construction expensive and time-consuming.

A "bottom-up" sheet pile solution was chosen for the project in place of conventional temporary excavation support and an in-situ concrete wall because of the significant cost and schedule savings it induced. Sheet piles used as permanent retaining elements considerably simplify the construction process. The separate foundation system consisting of concrete bearing columns for the seven seven-storey buildings was built first. The sheet piles of the retaining wall for the 7.5-m-deep excavation for the two-level underground car park had to be driven through the limestone to reach the design elevation.

ArcelorMittal provided a complete foundation package including design recommendations, specification of sheet pile sections and on-site guidance for the construction team. The innovative solution involved using steel sheet piles as permanent retaining elements once excavation was completed and as temporary separation walls as the site was divided into a number of construction bays. Subdivision into several sections primarily reduced the concrete pour for the bottom slab into manageable sizes.

Some 3,000 tonnes of steel sheet piles were installed with a crane-mounted vibratory hammer using a single-level template for guidance. About half the piles remained in the ground at the end of construction as the permanent outer wall of the basement structure.

The concrete bearing columns of the residential buildings' foundation were built before installing the sheet piles



A driving template was used to guide the AZ 26 piles





9-m-long AZ 26 sheet piles with a web / flange thickness of 12.2/13.0 mm were chosen to ensure penetration through the hard soil layers to the depth required by the design. An HP pile fitted with a driving shoe was driven ahead of the line of sheet piles to fragment the limestone, enabling the sheet piles to be driven without damage.

Once pile driving was complete, formwork was placed at the heads of the sheet piles and a concrete cap poured. The capping beam incorporated temporary ground anchors that had been drilled through the sheet piles to provide temporary support until the floor slabs were cast. The interior of the first bay was then excavated to El. -7.5 m.



A capping beam incorporating temporary tie rods was placed at the head of the AZ 26 piles



The underwater concrete of the bottom slab was poured with a tremie



The interlocks of the piles were cleaned and seal-welded to render the excavation watertight





Divers inspected and where required cleaned the sheet piles at the bottom of the excavation to ensure proper connection with the bottom slab. Underwater concrete was tremied to create a 1.2-m-thick slab that provided the seal needed for construction to begin within a dry excavation. The sheet piles, which came under pressure as the water was drawn down, were pressed against the concrete, effectively sealing off water from below trying to seep through the concrete-to-steel interface.

The middle interlocks of the AZ 26 double piles had been welded prior to installation. Once groundwater was pumped out, the remaining interlocks were seal-welded. When the sealing was completed, the piles serving as permanent walls were cleaned and an aesthetic coating was applied. The requirements for life expectancy and those resulting from fire analysis were easily met by the exposed sheet pile solution.



Temporary sheet piles separating different parts of the excavation were held together with walings



The coated sheet pile walls add an aesthetic aspect to the finished car park

Dadeland, Miami | USA

**Owner:** Gulfside Development

**Contractor:** Miller & Solomon, Ebsary Foundation

**Designer:** CEC Consultants

**Steel sheet piles:** AZ 26

**Sheet pile length:** 9 m

**Steel grade:** A572 Gr 50

**Total quantity of sheet piles:** 3,000 tonnes (approx.)

# Hopmarkt

Aalst | Belgium



Aalst is a Flemish town of 83,000 inhabitants situated 25 km northwest of Brussels. The city recently finished the redevelopment of the Hopmarkt square and surroundings, one of the big projects the municipal council has launched to renovate its historical city center. The project involves the construction of a three level underground car park for 317 cars and the reconstruction of the square with trees and an area for public events with two pavilions housing a bar, a restaurant, a city shop and parking utilities. The construction of the car park, the pavilions and the area for public events was awarded to Interparking NV, who will run the car park in concession for 30 years. Interparking contracted MBG NV for the construction works.

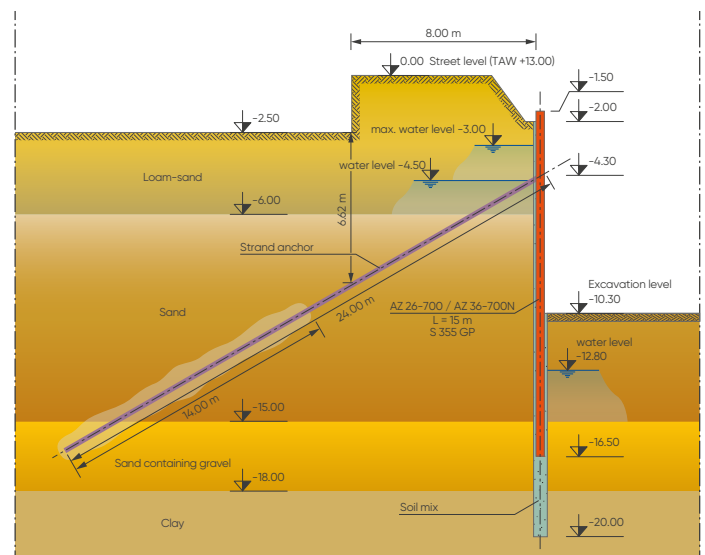
The Hopmarkt square is surrounded by buildings without deep foundations. Due to a settlement risk on a subsoil of peat layers and soft loam, the construction work had to be vibration free ( $< 2 \text{ mm/s}$ ) and lowering the water table was limited. The lowest water level allowed outside the building pit was  $-4.5 \text{ m}$  below street level (8.5 m TAW). Therefore, the original design included an execution with slurry walls, reaching into the clay layer up to  $-20.0 \text{ m}$  below street level.

Soil & piling contractor Soetaert-Soiltech proposed a more economical and faster solution with a better watertightness: a combination of Cutter Soil Mix (CSM) and steel sheet piles. Sheet piles can be lowered in fresh soil mix walls without generating any vibrations. After hardening, the soil mix walls serve as a watertight screen during excavation ( $k_h < 10^{-8} \text{ m/s}$ ). The sheet piles act as retaining walls during and after the construction phase, as 100% watertight walls

after excavation, and as permanent visible walls after completion of the car park transferring vertical loads from the car park (acting like bearing piles).

Because the calculations of an AZ 26-700 wall indicated a displacement close to the maximum allowed 60 mm, a mix of AZ 26-700 and AZ 36-700N profiles in steel grade S 355 GP was chosen to be installed in an alternating way. Measurements after excavation indicated the displacement of the sheet piles did not exceed 28 mm.

ArcelorMittal's in-house design department carried out a fire resistance analysis, demonstrating that the sheet pile sections could resist a 90 minutes ISO fire caused by burning cars in one level.



Typical cross section





The 550 mm thick CSM wall was installed over the total circumference of the car park (232 m) up to a depth of 21.0 m below street level, embedded 1 to 2 m into the impervious clay layer. The 15 m long AZ sheet piles were inserted with a Bauer RG25T rig in the still liquid soil mix up to -16.5 m below street level.

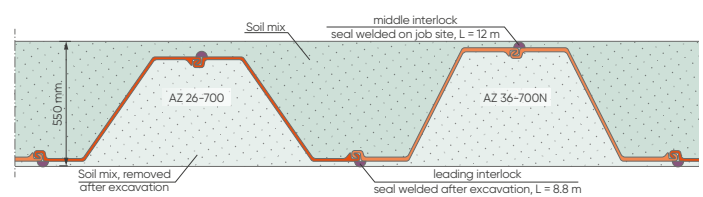
Once the sheet piles were installed, excavation started inside the pit down to level -4.7 m, while the inside of the building pit was drained. A row of strand anchors was installed at level -4.3 m. The anchor blocks were injected and welded to make them watertight. Next, the excavation continued to the bottom level of -10.3 m. The soil mix was removed on the excavation side and the sheet piles were cleaned. To achieve a 100% watertight wall the middle interlocks were seal-welded at the job-site before installation over a length of 12.5 m and the leading interlocks were seal-welded over 8.8 m after excavation.

To ensure a watertight connection between the sheet piles and the base slab, steel plates were welded to the sheet piles and incorporated in the concrete base slab.

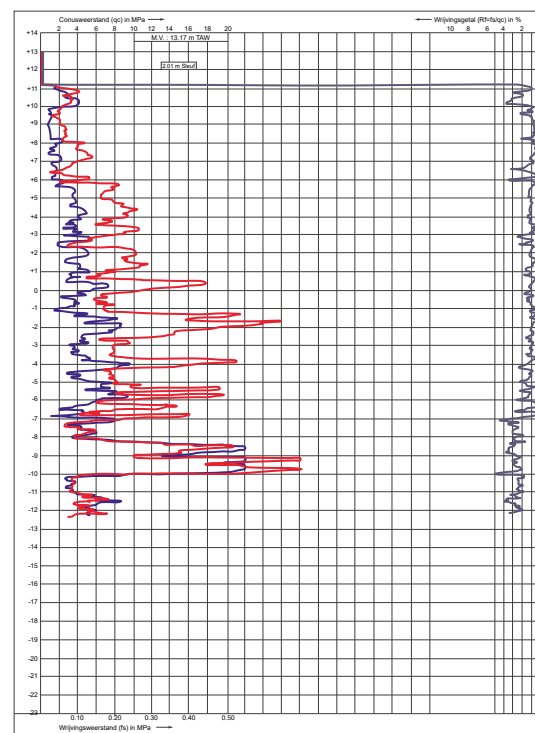
To prevent the floating of the concrete base slab of the car park, 475 active micropiles were installed. The piles are 16 m long and can resist 450 kN tension force each. The base slab was poured in two phases (40 + 18 cm thickness).

After the construction of the car park slabs, which serve as permanent struts for the sheet pile retaining wall, the sheet piles were sandblasted and coated for aesthetic reasons.

The works started in February 2012 and the car park was completed in July 2013.



CSM wall



Typical CPT's

#### Hopmarkt, Aalst | Belgium

**Owner:** Interparking NV, Brussels

**Contractor:** MBG NV, Antwerp

**Designer:** Jaspers - Eysers | Architects, Brussels

**Steel sheet piles:** AZ 26-700, AZ 36-700N

**Sheet pile length:** 15 m

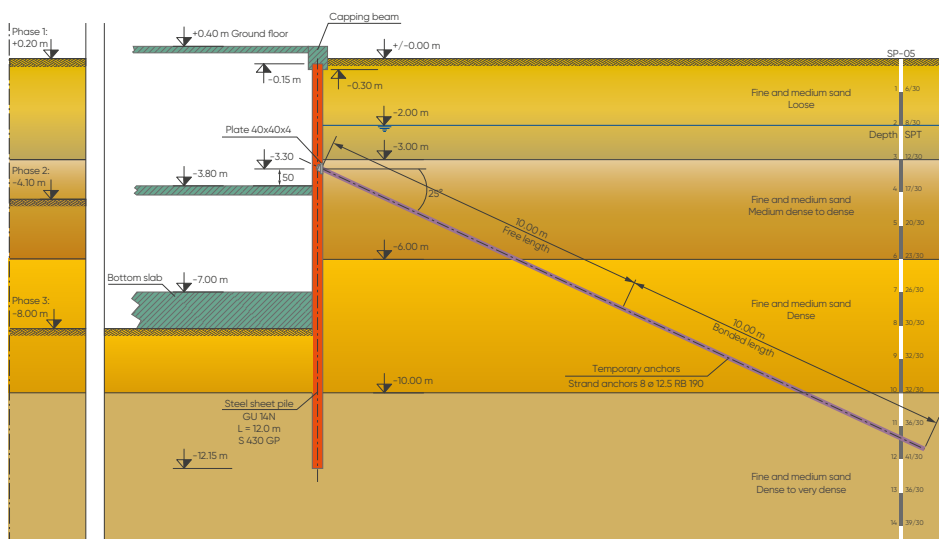
**Steel grade:** S 355GP

**Total quantity of sheet piles:** 558 tonnes



# Vogue square

Rio de Janeiro | Brazil



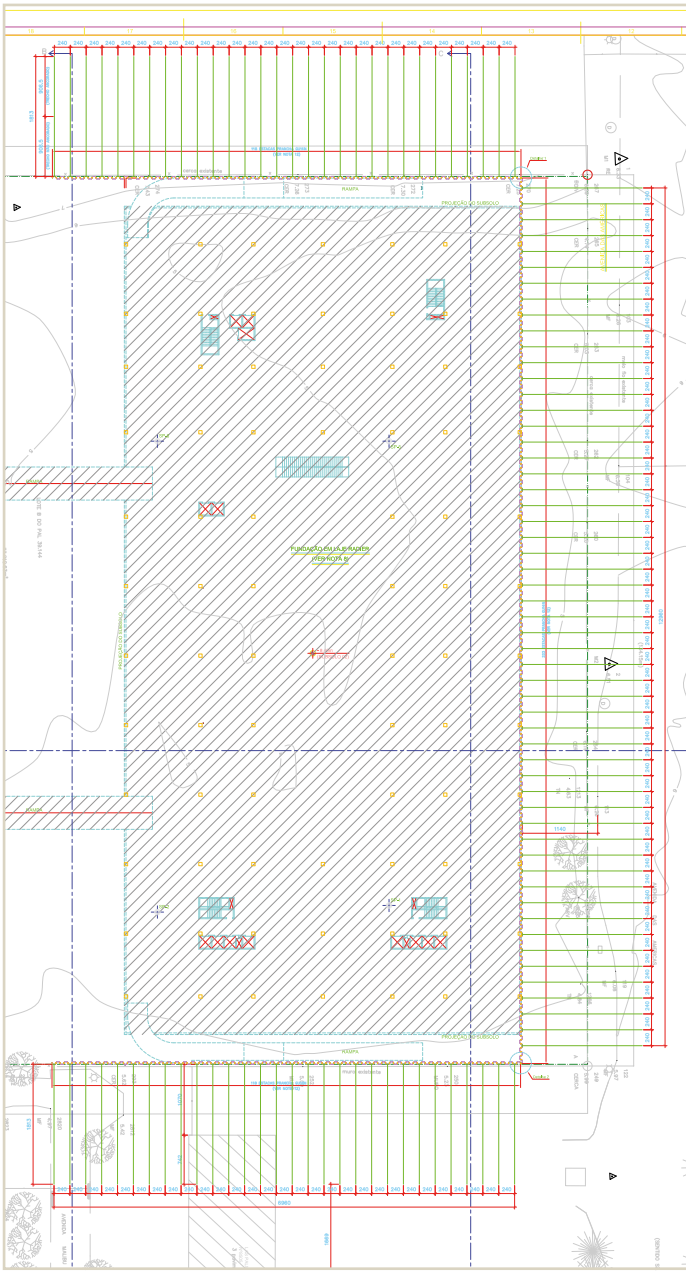
Typical cross section close to borelog SP-05

*Recreio dos Bandeirantes* is a nice neighbourhood located about 35 km from Rio de Janeiro's city centre. This youngest district of the city, with a population of around 100,000, continues attracting middle and upper-class families looking for an environmentally-friendly and safer place to live.

Being a relatively recent development, the architecture consists primarily of small buildings and residences close to the seafront, with up to three stories. However, like in most urban cities, parking area is a challenge for new residential buildings and shopping malls.

The choice of the two-level underground car park for the new shopping mall and hotel Vogue Square was quite straightforward, and the design engineer proposed to the owner a still quite rare solution in Brazil: steel sheet piles used as the permanent retaining wall around the parking, but foremost, the sheet piles stay apparent. To enhance aesthetics, sheet piles are coated.





Layout

ArcelorMittal supplied 355 tonnes of 12.0 m long GU 14N sheet piles in steel grade S 430 GP. According to European standards (EN 1993- 5), retaining walls built with U-type sheet piles should be installed as double piles, and each double pile should transfer shear forces, so the double piles were delivered crimped (standard pattern).

The ground consists of loose fine sands in the upper layer, and medium to dense sand deeper layers, with SPT values ranging from 6 at the top up to 41 at the tip of the sheet pile.

During the temporary excavation phase, the sheet pile wall was anchored with one row of grouted anchors at elevation -3.30 m. The pre-stressed strand anchors were 8  $\varnothing$  12.5 RB 190, 20 m long, with a minimum resistance of 736 kN working load. During the service life, the anchors are released and the concrete slabs act as permanent struts. The top slab is 30 cm thick, the second slab is 40 cm thick, and the 100 cm thick bottom slab of the parking was designed as a raft foundation to resist the hydrostatic pressure due to groundwater (Archimede's principle, around 6 m of water pressure difference).

Vogue Square, Rio de Janeiro | Brazil

**Owner:** Construtora Calçada S/A ([www.calcada.com.br](http://www.calcada.com.br))

**Contractor:** Construtora Calçada S/A

**Driving contractor:** ThyssenKrupp Brasil

**Consulting engineer:**

ABS Engenharia ([www.absfundacoes.com](http://www.absfundacoes.com))

**Steel sheet piles:** GU 14N

**Sheet pile length:** 12 m

**Steel grade:** S 430 GP

**Total quantity of sheet piles:** 355 tonnes

The design life of 50 years can be achieved by combining a coating protection with an estimated loss of steel thickness of 1.0 mm on the bare steel surface in the atmospheric zone. The coating system is a 180 µm thick epoxy layer on a zinc primer, applied only on the excavation side, over 60 % of the sheet pile length.

The project started in 2014, and the sheet piles were supplied and installed between August and September of 2014. The key advantage of the steel sheet pile solution was definitely its fast execution. It took the contractor only 35 days to install the 230 double piles, with a daily average rate of 6 to 7 double piles. ThyssenKrupp Brazil drove the sheet piles using a vibratory hammer ABI MRZV 30VV with a centrifugal force of 1,500 kN, and a variable static moment of 30 kgm, mounted on an excavator ABI MOBILRAM TM 20/25 SD. It is worthwhile to note that the sheet piles were driven close to an existing building without affecting its operations nor its foundations.

The groundwater was lowered during the various execution phases by using wells inside the excavation.

Additional key advantages of the sheet pile solution were the high watertightness of the wall, the great, yet uncommon aesthetical aspect, the reduced number of workers required to execute the retaining wall, and the fact that being a prefabricated element, there is no need for curing time or inspection of the quality of in-situ poured material. Besides, such a work environment is quite clean for a construction site.

A concrete capping beam on the head of the sheet piles allows for an impeccable finish, and for transmission of vertical loads from the superstructure to the soil.

The mall and the hotel opened in 2016.

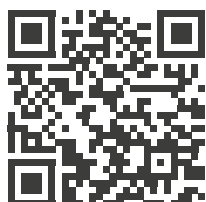




### Going further : explore our comparative studies

Are you curious how steel sheet piles perform compared to other underground car park wall solutions? Visit our website to explore detailed comparative studies performed by independant engineering consultants. They benchmark steel sheet piles solutions against alternatives materials like secant piles and diaphragm walls, highlighting their advantages in cost, speed, and sustainability for urban construction.

<https://sheetpiling.arcelormittal.com/engineering/benefits-steel-sheet-piles/underground-car-parks-0>



## Disclaimer

The data and commentary contained within this steel sheet piling document is for general information purposes only. It is provided without warranty of any kind. ArcelorMittal Commercial RPS S.à r.l. shall not be held responsible for any errors, omissions or misuse of any of the enclosed information and hereby disclaims any and all liability resulting from the ability or inability to use the information contained within.

Anyone making use of this material does so at his/her own risk. In no event will ArcelorMittal Commercial RPS S.à r.l. be held liable for any damages including lost profits, lost savings or other incidental or consequential damages arising from use of or inability to use the information contained within. Our sheet pile range is liable to change without notice.



**ArcelorMittal Commercial RPS S.à r.l.**  
Sheet Piling

66, rue de Luxembourg  
L-4221 Esch-sur-Alzette (Luxembourg)  
[sheetpiling@arcelormittal.com](mailto:sheetpiling@arcelormittal.com)  
[sheetpiling.arcelormittal.com](http://sheetpiling.arcelormittal.com)



Hotline: (+352) 5313 3105



ArcelorMittalSP



ArcelorMittal Sheet Piling